

Intrigue

Direct Vent
Gas Fireplace



Shown with decorative doors
#ST-1520 - Textured Black

Your quest for the perfect fireplace ends here!

Ambiance Fireplaces introduces the "Intrigue"



It's no accident that the new *Intrigue* caught your eye; you're in extremely good company!

Innovation and great design elements don't happen by accident. Before we went to the drawing board, *Ambiance Fireplaces* consulted with over one-hundred veteran fireplace shop owners from coast to coast asking two questions: "What refinements would you incorporate into the 'ultimate' fireplace if you were designing it?" And, "If this fireplace were going into YOUR home, what would you have us do differently?" These veteran dealers eagerly contributed their best ideas knowing the features their customers were seeking but simply couldn't find in one fireplace.

Two years later, after extensive research, design and engineering, the *Intrigue* was born!

Intrigue

is 'loaded' with special features:

- The StepFyre™ burner – This innovative burner breakthrough puts glowing embers BELOW the fire where embers actually belong!
- It's the most realistic fire in the industry!
- The eye-appealing, 12-piece, hand-painted log set balances the flame and "fills" the firebox with satisfying ambiance.
- Choose from 87 variations in fronts and finishes... one to suit any decorating scheme.
- Bigger fire-viewing area... 910 inches of glass, it's the biggest in its class!
- An "Intuitive" IPI remote control... truly easy to understand and operate.
- The Ecotel™ "green", intelligent, thermostatic remote control automatically and efficiently keeps you comfortable with six automatic flame settings; you'll burn less gas!
- The firebox's pleasing angles create a more refined "natural" feel of depth and height to the burn chamber.
- This IPI ignition system provides an option for "direct spark" OR "standing pilot."
- A stand-by battery back-up that allows emergency operation during power outages.
- An over 50% turn-down ratio for maximum fuel savings and comfort control.
- Accent lights that adjust remotely to six different settings (included with the model 200 at no extra charge).
- A remote control 'night light' that operates independently of the burner.
- Ultra-quiet, dual, remotely-controlled fans (standard equipment on the model 200).
- Refractory brick lining is included...at no extra charge with both models.
- Flexible venting profiles permit vertical venting up to heights of 50'.
- Efficiency rated: AFUE, Steady State, Canadian P-4, EnerGuide and Heater Rated.

The beauty of the *Intrigue* fireplace literally stops you in your tracks! This is the ultimate gas fireplace!

Your quest for the perfect fireplace ends here!

DECORATIVE DOORS



#ST-1511 - Copper Vein



#ST-1514 - Vintage Vein



#ST-1517 - Oil Rubbed Bronze



#ST-1519 - Textured Black



#ST-1520 - Textured Black



#INT-MDOR



#INT-DOR

FINISHES

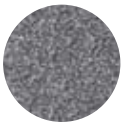
Powder Coat



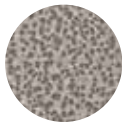
Vintage Vein



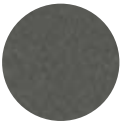
Copper Vein



Silver Vein



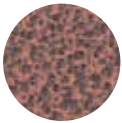
Nickel Vein



Charcoal



Gold Vein



Rustic Vein



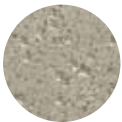
Textured Black



Matte Black



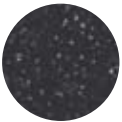
Bronzed Iron



Bone Taupe



Weathered Brown



Silver Mist



Oil Rubbed Bronze

Premium Finishes



Metallic Latte



Burnished Bronze



Rust Patina

(Printed colors may vary from actual finish)

LOUVERS



ST0-1511



ST0-1514



ST0-1517



ST0-1518



ST0-1520

HANDLES



Spiral



Square



Wire



Shown with decorative doors
#ST-1514 - Vintage Vein

Intrigue

Direct Vent Gas Fireplace IPI - (Intermittent Pilot Ignition)
#INT-100 & #INT-200



Both **Intrigue** models come standard with a remote modulating valve system w/ flame & fan adjustment (remote control included).
The **#INT-200** (only) will include a fan kit & light kit standard.

STANDARD FEATURES

- Intrigue NG 39,500 btu - high / 18,500 btu low
LP 39,500 btu - high / 18,500 btu low
- Efficiency Steady State NG - 75.53% / LP - 76.75%
- EnerGuide Rating (Canada) NG - 70.94% / LP - 72.41%
- High quality quick-latch lifetime warranty glass (26" x 35")
- Huge viewing area!
- Refractory brick lining
- Ecotel™ "green" intelligent thermostatic remote control (flame, light & fan adjustment)
- Black louvers
- 12 piece hand painted log set
- Light kit #INT-200 only
- Fan kit #INT-200 only
- StepFyre™ engineer designed burner system
- Minnesota Energy Code Compliant to 50 pascals

OPTIONAL FEATURES

- Fan kit (2) -75 CFM fans (standard on #INT-200)
- Light kit (standard on #INT-200)
- Decorative door measurements - 36 5/32" h x 41 3/4" w
- **Decorative door/handle designs and finish options.**

LIFETIME WARRANTY

- Firebox ➤ Heat exchanger ➤ Burner cover & tube
- Logs ➤ Glass ➤ Refractory lining

SPECIFICATIONS (without doors)

- Height: 34 1/2" ➤ Width: 40 7/8" ➤ Back Width: 30 3/8"
- Depth: 19" ➤ Weight: 215 lbs.

MINIMUM CLEARANCES

- From fireplace face top to framing 10"
- From fireplace left & right sides & back 1/2"
- Fireplace bottom to flooring..... 0"

- Fireplace top to ceiling..... 31"
 - Fireplace side to adjacent sidewall..... 3"
 - Mantel 9" deep from top of fireplace* 12 1/2"
- *Consult the installation manual for mantel clearance requirements.**

MINIMUM FRAMING DIMENSIONS*

Horizontal Venting:

- Height: 44 1/2" ➤ Width: 41 3/8" ➤ Depth: 21 1/2"

Vertical Venting:

- Height: 44 1/2" ➤ Width: 41 3/8" ➤ Depth: 21 1/2"

***CONSULT THE INSTALLATION MANUAL FOR FRAMING DIMENSION REQUIREMENTS WHEN INSTALLING OPTIONAL DECORATIVE DOORS.**

VENTING SYSTEMS & REQUIREMENTS

This stove is manufactured *standard* to accept 5" x 8" vent pipe.
Dura-Vent & Selkirk's 4" x 6 5/8" reducer can be used on this fireplace.

- Simpson Dura-Vent™ DV-GS Pipe - 5" x 8" & 4" x 6 5/8"
- Selkirk Metalbestos™ Direct Chimney - 5" x 8" & 4" x 6 5/8"
- Ameri-Vent™ Direct Chimney System - 5" x 8"
- Metal Fab™ 5" x 8"
- ICC™ 5" x 8"
- BDM™ 5" x 8" Flex & Rigid
- Security™ Systems - 5" x 8"

IMPORTANT: Wall Pass-Thru thimble required for ALL Horizontal vent runs. Discuss with the venting mfg. which one works best for your application & wall thickness. The horizontal vent heat shield must be installed when using a 45° elbow to horizontally position the vent system. Exception: corner installations.

Elbows: For each additional 90° elbow used after the first elbow, 3' must be subtracted from the maximum venting allowed. For each additional 45° elbow used after the first elbow, 1 1/2' must be subtracted from the maximum venting allowed.
Note: (2) 45° elbows = (1) 90° elbow.

Horizontal Terminations - No Vertical Sections

MINIMUM: 45° elbow + 6 inches + termination cap
MAXIMUM: 45° elbow + 6 feet + termination cap
(see note above regarding Horizontal Vent Heat Shield)

Vertical Terminations - No Horizontal Sections

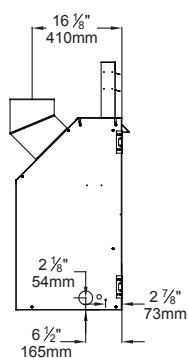
MINIMUM: 45° elbow + 2 feet + termination cap
MAXIMUM: 45° elbow + 50 feet + termination cap

HORIZONTAL / VERTICAL COMBO AND/OR PIPE SIZE REDUCTION*

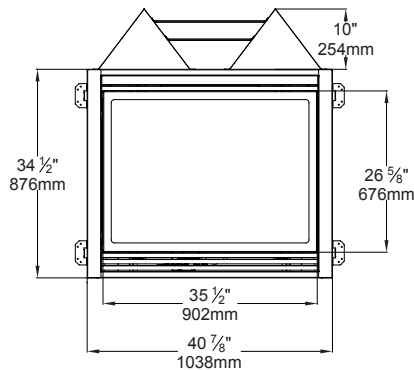
36 feet total = 18 feet maximum horizontal / 18 feet maximum vertical
***Consult the installation manual for horizontal & vertical combination venting and/or pipe size reduction.**

SAFETY & APPROVALS

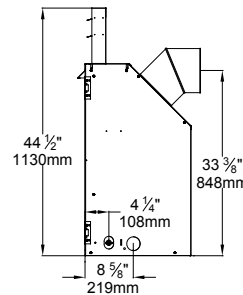
- Each fireplace factory tested
- Tested by OMNI-Test Laboratories
Complies with ANSI-Z21.88-2009 • CSA 2.33-2009
'Vented Gas Fireplace Heaters'
- Canada P-4 installation approved
- Sealed combustion chamber
- Removable control board with 30-second safety pilot
- Automatic pressure relief glass system
- True battery back-up for IPI system
- Bedroom & mobile home approved
- **Hot glass will cause burns, do not touch the glass until fully cooled - Never allow children to touch the glass, optional screen doors highly recommended.**



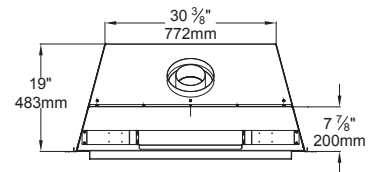
LEFT



FRONT



RIGHT



TOP

Tested and Listed By Beaverton, Oregon USA
OMNI-Test Laboratories, Inc.

MADE IN THE U.S.A.

ENERGUIDE

NOTE: Refer to the Intrigue's installation manual for complete installation & venting requirements.
Features, Options & Specifications are subject to change. 11/1/11